



# "EMBRACING OUR COMMUNITY"

*The Ivy*  
*Foundation*   
WASHINGTON, DISTRICT OF COLUMBIA

2017 Annual Report

# Table of Contents

- About the Ivy Foundation
- Chairman Message
- Executive Director Message
- 2017 Service Snapshot
- Grantee Spotlight
- Our Partners
- Resource Development
- Scholarship Recipients
- Statement of Financial Activities
- Foundation Supporters





## **2017 BOARD OF DIRECTORS**

### Officers

Daphne Doyle Benbow  
*Board Chairman*

Rosalie H. Stroman  
*Executive Director*

Vice Chair  
Sabrina E. Williams

Linda Jackson Jones, Ph.D.  
*Recording Secretary*

Sherri Street  
*Treasurer*

Barbara White  
*Financial Secretary*

Keight Kennedy  
*Asst. Financial Secretary*

Ferial S. Bishop  
*Parliamentarian*

Shaunia Carlyle, Esq.  
*Attorney Advisor*

### Members

*Crystal Penn Boswell*  
*Janis Brown, Ph.D.*  
*Judith Brown*  
*Courtney Coffey*  
*Nikki DeJesus Sertsu*  
*Beverly A. Fields, Esq.*  
*Alicia D. Johnson, Esq.*  
*Jacqueline McGlen*  
*Karen Spruill*  
*Karyn Upshaw*

# THE IVY FOUNDATION

## Who We Are...

The Ivy Foundation of Washington, D.C., a 501(c)(3) organization, was incorporated in 1987 by the members of the Xi Zeta Omega Chapter of Alpha Kappa Alpha Sorority, Incorporated®. The Ivy Foundation provides opportunities for young people to achieve healthy and productive outcomes; supports academic achievement and higher education; promotes community economic development; and encourages volunteerism through community service.

## What We Do...

With more than 220 volunteers, The Ivy Foundation serves as a vehicle through which contributions are channeled for the enrichment of the Washington, D.C. community.

## How Can You Help?

The Ivy Foundation is a not-for-profit organization that answers to the community -- not investors. The monies raised are used to fund community programs and initiatives so that we can provide the best possible services for the children, youth, and families that the organization was created to support. By supporting The Ivy Foundation, you support your community in many ways.





## Chairman's Message

*"As long as poverty, injustice, and gross inequality persist in our world, none of us can truly rest."  
-Nelson Mandela*

Achieving meaningful results for children and families requires ensuring that all children have an opportunity to thrive. The Ivy Foundation believes a child's race or ethnicity should not be a predictor of his or her well-being or future opportunity. We follow a simple equation: real people + real power = real change.

This year was marked by continued change for The Ivy Foundation. Like so many others, we had to significantly reduce our expenses and dramatically change our approach to our work in order to continue to advance our mission. It is always good to pause at the end of each year—particularly one filled with so many challenges—to assess what has been accomplished. I hope that when you look at the many accomplishments in this annual report, you will agree that much important work has been done.

The pace of our progress speaks to the remarkable partnership between our partners who demonstrate a deep commitment to the institution's values, goals and mission. Every one of our initiatives is grounded in the idea that each of us has the right to live in a just society, one in which every individual is afforded the opportunity to contribute to the maximum of his or her ability, and that such full participation benefits everyone in that society. Together we have traversed a time of profound transformation, and the Foundation has emerged stronger.

In 2017, our work focused on strengthening families, building stronger communities and ensuring access to opportunity, because children need all three to succeed. We continued to transform the lives of some of our community's most vulnerable families. Awareness, advocacy and action were the primary vehicles for our service initiatives.

The Ivy Foundation has been testing and refining recipes for big change since we were established more than 30 years ago. Here are the secret ingredients we've discovered: Take ordinary people who have experienced the pain of poverty and injustice. Equip and inspire them with the tools of social change. Watch them rise.

Moving forward, The Ivy Foundation will continue to accomplish our work in ways that are more strategic, efficient, and effective. Above all, we will stay focused on our vision where all children and youth are safe, are nurtured in their families and communities, and grow up to be productive citizens.

I would also like to take this opportunity to thank the community and all of our sponsors. The Ivy Foundation would not be here without your loyalty and generous support. It is only through creative collaborations and innovative strategies that we can find ways to break the cycle of poverty and help end the mindless suffering of so many. Thank you!

Onward,



Daphne Doyle Benbow  
Chairman of the Board



## Executive Director's Message

Dear Friends and Supporters,

It is both an honor and privilege to serve as the Executive Director of The Ivy Foundation. This role has provided me with the opportunity to be a part of the leadership of a dynamic organization at a time when there is so much potential for growth.

The Ivy Foundation is devoted to programs that target at-risk youth and that help disadvantaged families in the District of Columbia. In 2017, The Ivy Foundation served more than 250 families and more than 500 youth by supporting efforts and various causes, including childhood hunger, educational enrichment and programs that strengthen families. More than 800 backpacks and more than 1,500 school supplies were provided to students residing at the District of Columbia General Family Shelter and to students attending the John Burroughs School, Woodbridge International Public Charter School, the District of Columbia Bilingual School and the Excel Academy Public Charter School.



Through our scholarship program, in 2017 scholarships were awarded to five academically-talented, highly motivated high school seniors who demonstrated financial need, social commitment and leadership potential. We are very proud of these young people who exemplify dedication to excellence and public service.

There is always work to do, but we see this work as an opportunity to express our mission of providing opportunities and services for youth and families in the District of Columbia and display integrity in every choice we make. As we look to future days, our goal is to grow with integrity. We remain committed to giving a voice to and providing meaningful life for the people we serve.

Thank you for your interest in and continuing support of The Ivy Foundation.

A handwritten signature in cursive script that reads 'Rosalie H. Stroman'.

Rosalie H. Stroman  
Executive Director



A word cloud in the shape of a heart, composed of various words related to social issues and community support. The most prominent word is 'community' in the center. Other large words include 'help', 'education', 'work', 'change', 'people', 'school', 'provide', 'care', and 'see'. Smaller words include 'need', 'get', 'way', 'families', 'young', 'provide', 'care', 'change', 'one', 'school', 'many', 'time', 'education', 'years', 'take', 'health', 'young', 'provide', 'care', 'change', 'one', 'school', 'many', 'time', 'education', 'years', 'take', 'health', 'young', 'provide', 'care', 'change', 'one', 'school', 'many', 'time'. The words are arranged to form the overall shape of a heart, with the largest words in the center and smaller words towards the edges. The color palette is primarily shades of green, blue, and grey.

## THE COMMUNITY WE SERVE

### An east-west racial divide

Washington, DC, is one of most racially segregated cities in the United States, stemming from public policies and private actions that once limited where black residents could live, whether they could secure mortgages, and whom they could buy homes from. Today, Wards 4, 5, 7, and 8 on the east have a majority of black residents, and Wards 2, 3, and 6 on the west are majority white. About half of Hispanic residents live in Wards 1 and 4.

Since the 1950s, DC has been a majority-black city, but that majority has steadily shrunk. The black share of the population fell from 70 percent in 1980 to 61 percent in 2000 and 51 percent in 2010.

### The education equity gap contributes to racial inequities over a lifetime

Nearly all of DC's white residents older than 25 have a high school diploma and some college education, but nearly 31 percent of Hispanic residents and 17 percent of black residents lack a high school diploma or general equivalency diploma. Roughly half of black and Hispanic residents have some college education. The education-equity gap contributes to racial inequities in employment, income, housing, and even health, putting disadvantaged groups behind in other areas over the course of their lives.

### Many DC families struggle to earn a living wage

The cost of living in DC is among the highest in the nation, partly because of the high cost of housing and child care. The living wage for a parent to be able to support two children in DC is \$38.10 an hour, or about \$79,000 a year, according to an MIT study.

Data show that 67 percent of black families and 59 percent of Hispanic families had annual incomes under \$75,000, meaning they earned less than DC's living wage, but only 11 percent of white families did. Even when looking at full-time workers, more than 70 percent of blacks and Hispanics earn less than the city's living wage, compared with 44 percent of whites. East of the Anacostia River, four out of five black residents working full-time earned less than this living wage.

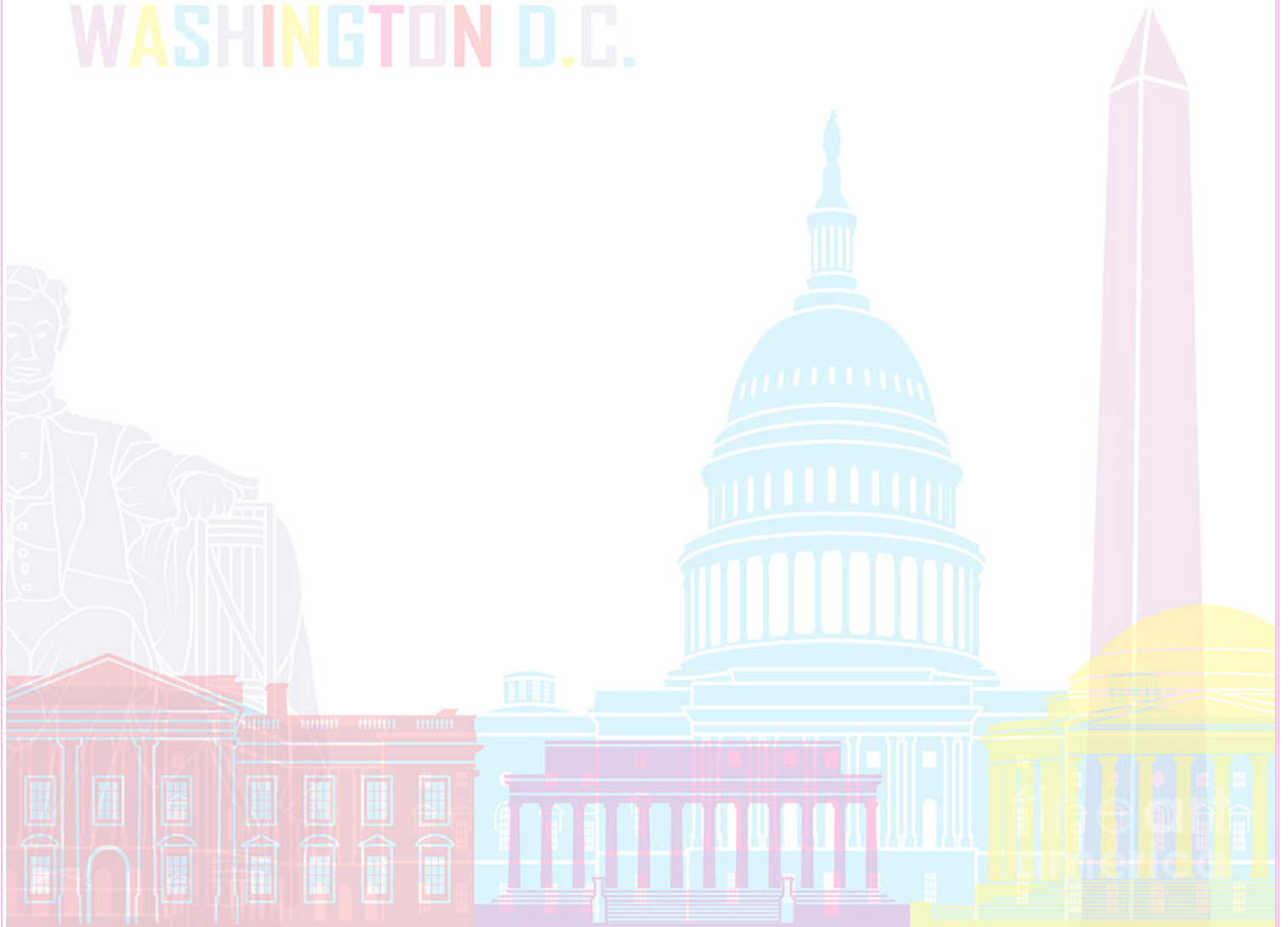


## Employment, education, and income inequities also lead to health inequities

How much we earn, where we live, and what we do for a living all have an effect on our health. So racial inequities in employment, education, income, and neighborhood conditions also show up in measures of health and well-being.

Black residents in DC are more likely than white residents to die from diabetes-related complications, strokes, heart disease, and certain types of cancer. Black residents were more than twice as likely as whites to die from colorectal, lung, and prostate cancer in 2009–13, and more than three times as likely as Hispanics to die from lung cancer. Ward 7 had the highest cancer prevalence among adults (7 percent) in the city in 2011, and Ward 2 had the lowest (4 percent).

WASHINGTON D.C.



**YOUTH**  
**& FAMILY**  
**SERVICES**





## **EMBRACING COMMUNITY: AREAS OF SUPPORT**

Inspired by a dedicated investment of human capital and a bold commitment to the principles of basic human rights, the Ivy Foundation devoted its talent and resources to this cause. Awareness, advocacy and action are the primary vehicles for the delivery of our services that affect youth and families in need:

### ***Education***

- Support of efforts designed to motivate, engage and assist high school students in reaching their maximum potential. Key areas include: Achievement, Self-Awareness, Communication, Engagement, Networking and Developmental Skills.
- Promote the lifelong learning process by donating and distributing more than 800 backpacks and more than 1,500 related school supplies to students in the District of Columbia.
- Support of Historically Black Colleges and Universities (HBCUs) in the District of Columbia (Howard University, University of the District of Columbia) and across the region.

### ***Health***

- Awareness and support for Alzheimer's programming and research.
- Increased awareness and support for stroke prevention with emphasis on hypertension management, diet and exercise.
- More focus on Mental Health by highlighting challenges among diverse populations with low utilization of mental health services.

### ***Family***

- Prioritize community-based childhood hunger partnerships with local agencies, food banks, and community pantries.
- Offer seasonal wraps programming to collect and donate hats, gloves, socks, scarves, coats, sweaters and other seasonal wraps for families in need.
- Initiate fiscal responsibility programs as members work with partner organizations and families to help increase their understanding of budgeting, basic financial planning, and benefits of home ownership.

### ***Environmental Stewardship***

- Support playgrounds to ensure children have safe and inviting places to play. Members worked on community and school playgrounds to restore, refresh, and renew.

### ***Global Impact***

- Support programs and projects to prepare today's youth for an increasingly global and complex society.

## GRANTEE SPOTLIGHT

Alpha Kappa Alpha Sorority, Incorporated®, Xi Zeta Omega Chapter

Xi Zeta Omega Chapter, the Ivy Foundation's 2017 community partner grantee, with resolve and dedication, worked diligently in the Washington DC Metropolitan community focused on the immediate challenges facing our communities with the determination to impart a legacy of enduring prosperity to marginalized communities.

### Educational Enrichment

**One Million Backpacks:** Members of Xi Zeta Omega worked tirelessly to ensure that students throughout D.C. were prepared throughout the school year by collecting filled backpacks. Total number of backpacks donated: 824



**A.S.C.E.N.D.** This program is designed to motivate, engage and assist high school students in reaching their maximum potential. ASCENDSM focuses on **A**chievement, **S**elf-Awareness, **C**ommunication, **E**ngagement, **N**etworking and **D**evelopmental Skills. Students in the ASCENDSM program had the opportunity to receive academic enrichment and life skills training to support their journey to college or vocational employment.





## Think HBCU:

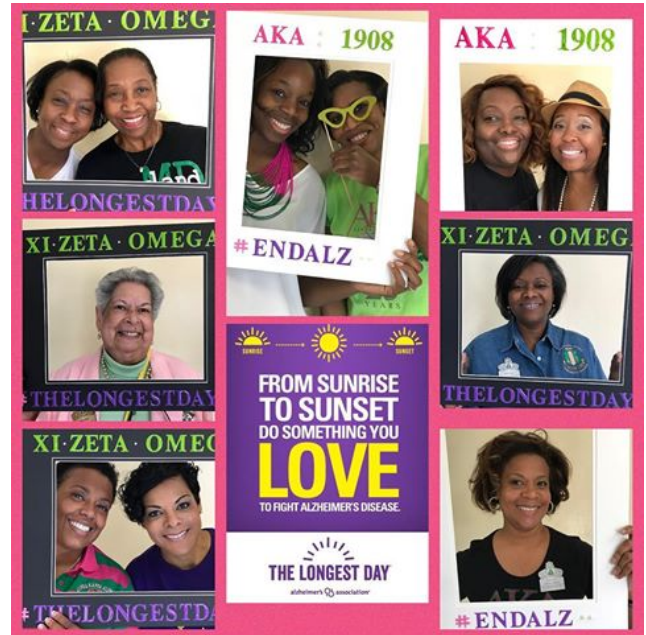
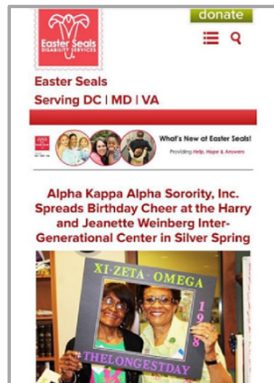
Support of Historically Black Colleges and Universities (HBCU) is a priority for The Ivy Foundation as Alpha Kappa Alpha launches a national campaign, Think HBCU<sup>SM</sup> to highlight HBCUs and their contribution to the sorority and society.



## Health Promotion

### Alzheimer's Disease/Caregiver Support:

The Alzheimer's Disease and Caregiver Support Program generated awareness and support for Alzheimer's programming and research. Alzheimer's disease is one of the fastest growing health challenges among African Americans.



**Stroke and Heart Disease Awareness:** In 2017, Xi Zeta Omega Chapter launched a major stroke prevention awareness campaign with emphasis on hypertension management, diet and exercise.



## Mental Health/Wellness:

In partnership with other organizations, members of Xi Zeta Omega focused on teens and mental health. Activities focused on personal accounts from adults who were diagnosed with mental health illnesses at young ages, and how they have adjusted their lives to cope in positive ways and to reach their goals in life. Additionally, teens created public service announcements encouraging their peers to seek help and to talk to professionals if they need someone to talk to about life's challenges.



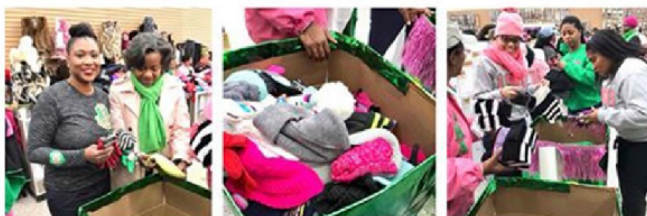
## Family Strengthening

Xi Zeta Omega's Family Strengthening Programs targeted critical issues facing many families, including lack of food, shelter and financial means.

Community based Childhood Hunger Initiatives were launched in partnership with local agencies, food banks and community pantries.

The Family Seasonal Wraps<sup>SM</sup> Program collected and donated hats, gloves, socks, scarves, coats, sweaters and other seasonal wraps for families in need.

Fiscal Responsibility Programs were initiated with partner organizations and families to help increase their understanding of budgeting, basic financial planning and benefits of home ownership.





## Environmental Ownership

Xi Zeta Omega implemented high impact programs to provide healthy environments and improve the quality of life in the underserved communities.

The AKA 1908 Playground Project<sup>SM</sup> ensured that children have safe and inviting places to play. Through its Acts of Green Program<sup>SM</sup> members promoted environmental sustainability by encouraging recycling, litter prevention and waste management through daily green efforts in local communities.



## Global Impact

The commitment to international affairs and the issues that impact people globally and their communities was implemented through Xi Zeta Omega's UN/USA Community Impact Day and UN/USA donation.







# COMMUNITY PARTNER ORGANIZATIONS



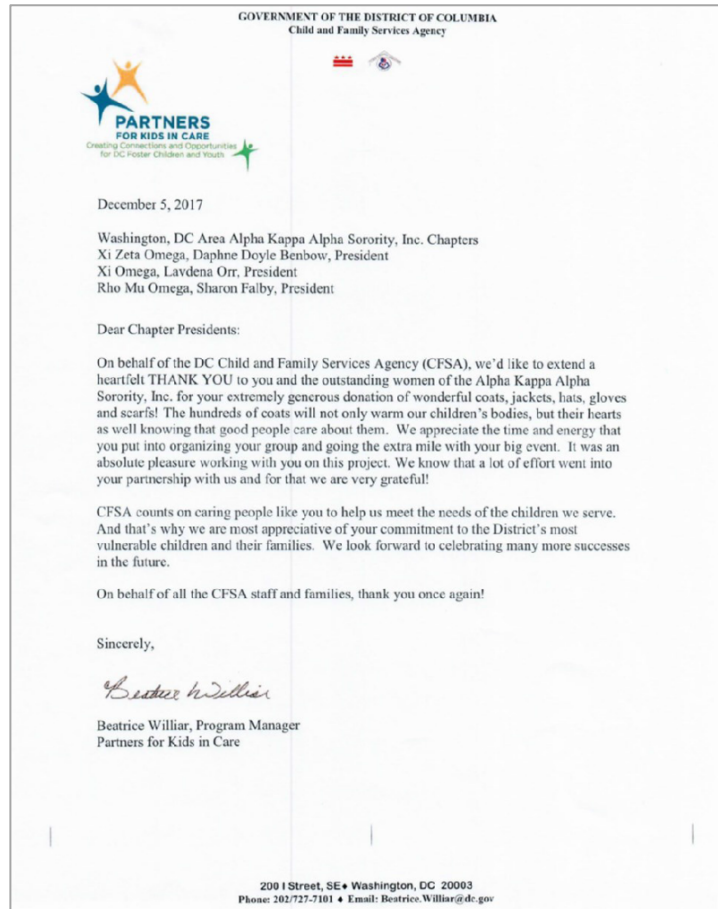
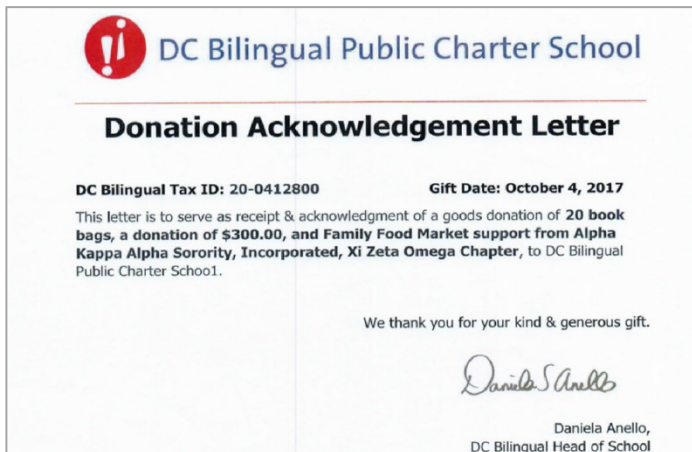
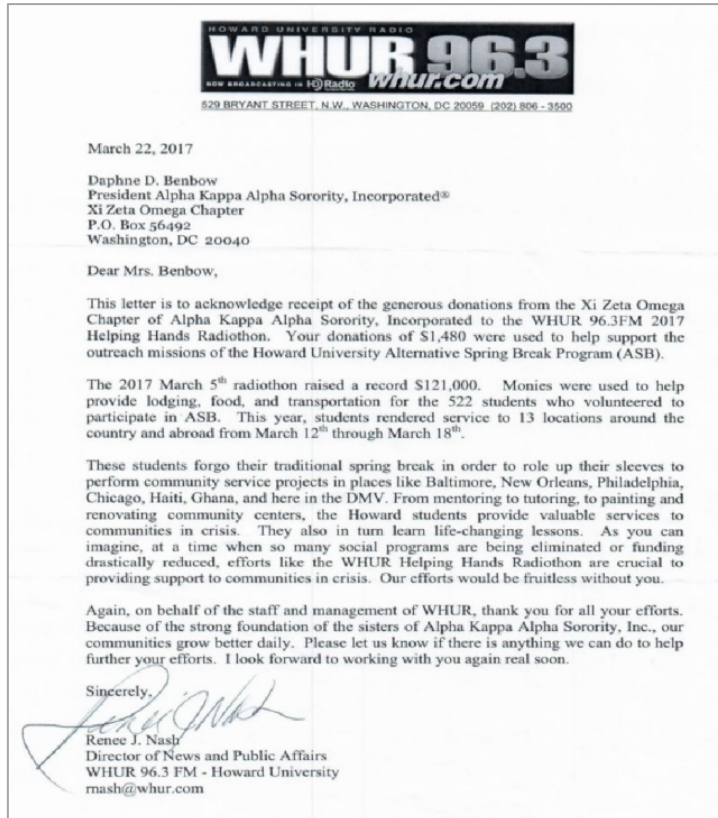
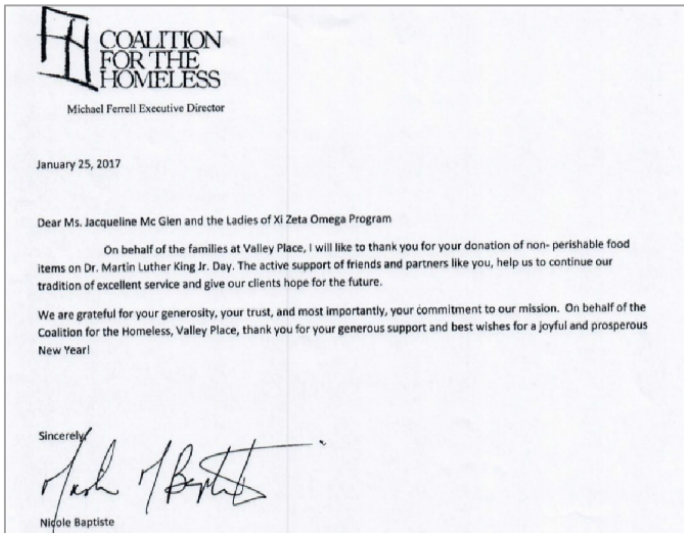
**BOYS & GIRLS CLUBS**  
OF GREATER WASHINGTON



DISTRICT OF COLUMBIA  
PUBLIC SCHOOLS



# GRANTEE PARTNER ACKNOWLEDGEMENTS





# RESOURCE DEVELOPMENT



## Men Who Cook

The Ivy Foundation in conjunction with Xi Zeta Omega Chapter and the Mu Lambda Chapter of Alpha Phi Alpha hosted Men Who Cook Event. Additional partners and sponsors included: Washington Wizards and NBC4. Men Who Cook raised more than \$12,500 through the support of more than 400 patrons. All proceeds benefited The Ivy Foundation and Alpha Phi Alpha, Mu Lambda scholarship programs.

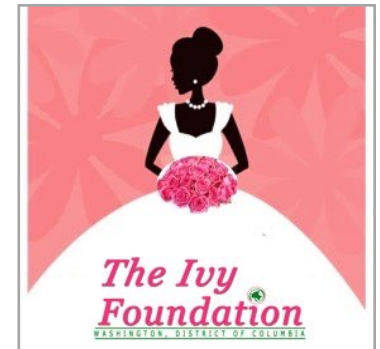


## 2017—Tea Rose Cotillion

The Ivy Foundation held its culminating event – the Tea Rose Cotillion in April 2017. The Tea Rose Cotillion is a formal presentation of debutantes to society at this biennial formal ball. It is the opportunity to highlight and celebrate their academic and artistic achievements, moral character, and social etiquette.

The theme was "*Today's Debutantes, Tomorrow's Leaders.*"

Success: More than 300 patrons raised over \$75,000 in scholarships.





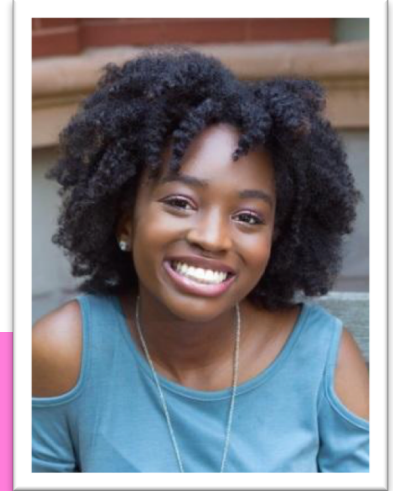
**S**cholarships

## 2017 IVY FOUNDATION SCHOLARSHIP RECIPIENTS

The Ivy Foundation has helped more than 100 students earn their college degrees since its founding.

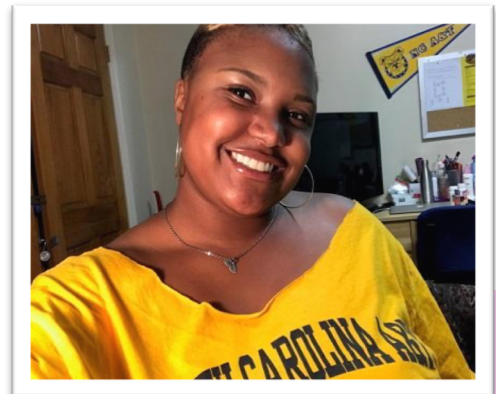
### **Olivia Trice**

*"Thank you for this scholarship; I am simply honored. This scholarship will assist me on my endeavors of becoming a filmmaker."*



### **Quonetta Jones**

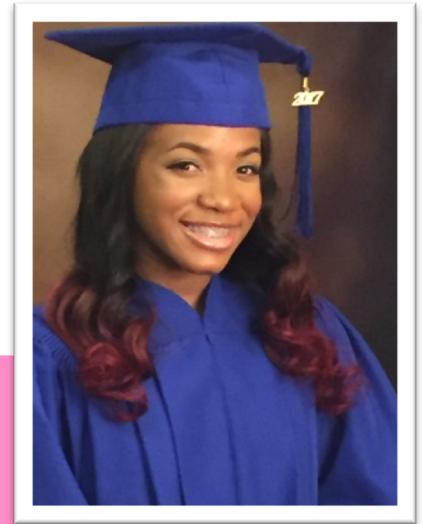
*"There aren't many minority women in the field of computer engineering. I hope that eventually I can start an organization to help empower women (all women) to work and stay in the field."*





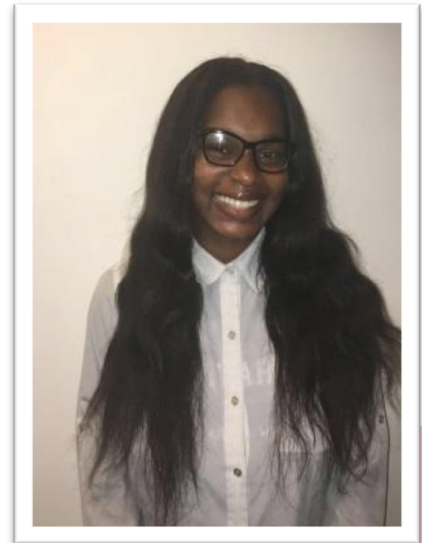
## **Jana Washington**

At a young age, she began to grow a love for helping others and a passion for children as she got older. During high school, she did all of her community service with children. Due to these things and a few experiences from her past, Jana plans to be a child and adolescent psychologist, to help save the life of a child someday.



## **Anu Omole**

*"My career goals are to become a lawyer and a businesswoman. When I go to college, I plan on double majoring in Family and Consumer Science and Business Management and possibly minor in Sociology if I can. My goal by obtaining a degree in Family and Consumer Science is to be able to provide leadership and support for the people who work to assist individuals, families, and communities in making informed decisions about their well-being, relationships, and resources to achieve optimal quality of life. By getting a degree in Business Management, I can open up multiple businesses, especially a child care center and a Nigerian style restaurant. Once I receive my two undergraduate degrees, I want to go to law school, pass the bar exam, and become a child advocate lawyer, so that I protecting the restricted and unrecognizable rights children have, which is my ultimate goal. "*



## OUR FINANCIALS



# STATEMENT OF FINANCIAL ACTIVITIES

11:17 PM  
05/16/18  
Accrual Basis  
ASSETS

## THE IVY FOUNDATION Balance Sheet As of December 31, 2017

<b>Current Assets</b>	
<b>Checking/Savings</b>	
12050 · PayPal	2,230.00
12000 · Wells Fargo 6726727958	2,260.18
10000 · Wells Fargo	71,484.68
11000 · Money Market	100,384.61
<b>Total Checking/Savings</b>	<b>176,359.47</b>
<b>Other Current Assets</b>	
18605 · Deposits and Prepaid Expenses	8,981.91
<b>Total Other Current Assets</b>	<b>8,981.91</b>
<b>Total Current Assets</b>	<b>185,341.38</b>
<b>Other Assets</b>	
18000 · Marketable Securities	29,371.00
18050 · Allowance for Mkt Value Adj	-822.00
<b>Total Other Assets</b>	<b>28,549.00</b>
<b>TOTAL ASSETS</b>	<b>213,890.38</b>
<b>LIABILITIES &amp; EQUITY</b>	
<b>Liabilities</b>	
<b>Current Liabilities</b>	
<b>Other Current Liabilities</b>	
25800 · Deferred Membership Dues	9,637.00
<b>Total Other Current Liabilities</b>	<b>9,637.00</b>
<b>Total Current Liabilities</b>	<b>9,637.00</b>
<b>Total Liabilities</b>	<b>9,637.00</b>
<b>Equity</b>	
30000 · Opening Balance Equity	-2,794.29
32000 · Unrestricted Net Assets	210,261.86
Net Income	-3,214.19
<b>Total Equity</b>	<b>204,253.38</b>
<b>TOTAL LIABILITIES &amp; EQUITY</b>	<b>213,890.38</b>

**DONORS**



## 2017 Supporters

**Amount**  
**\$5,000+**

**First**

**Last**

Andrea T.  
The Dana Foundation

Hewlett-Langster

**\$1,500 - \$4,999**

Bonita  
Debra  
Ferial  
Gloria  
Jacquelyn  
Judith D.  
Junie  
Karen  
Mary  
Melinda  
Patricia & Robert  
Raymond & Associates LLC  
Rosalie H.  
Sherman and Lisa  
Sherri  
Stewart Funeral Home, Inc.

Coe  
Flowers  
Bishop  
Lawlah  
Green  
Brown  
Harris  
Spruill  
Pitman  
Bolling  
Khan

Stroman  
Cash  
Street

**\$500-\$1,499**

Adrian  
Akil  
Barbara  
Belinda  
Bernard and Rhea  
Brenda  
Brendolyn  
Byron  
Carla  
Claude  
Courtney  
Curtis  
Dan and Miriamm  
Daphne Doyle  
Debbie  
Eric and Cheryl  
Jacqueline  
Jean Hobbs  
Juanita  
Kathyrn  
Kevin & Kirsten  
LaShelle D.

Brown  
Dickens  
White  
LaValle  
Knowles  
Neal  
McCarty-Jones  
Jeffery  
Miller  
Bailey  
Coffey  
Anderson, Jr.  
McKinney  
Benbow  
Keith  
Umbles  
Mathews-Jiles  
Dobbins  
Hayes-Hill  
Jeffery  
Howard  
Franklin

**\$250-\$499**

Louis  
Maggalean W.  
Monique  
Priscilla Harris  
Rylan  
Sheila  
Stephanie  
Yolanda

Alicia D.  
Alwilter T.  
Angela Kay  
Annette  
Anthony R  
Arielle  
Atiya Natak  
Benjamin  
Bettie H.  
Beverly Ann  
Caitlin  
Candace McGill  
Carolyn  
Cassandra  
Charles W.  
Charmaine  
Charnika  
Cheryl Lynn  
Crystal  
Crystal R. Penn  
Danielle  
David  
Davida  
Debbie-Anne A.  
Delora  
Delores & Ernest  
Diane  
Donna  
Donna  
Ellen  
Eric  
Erica  
Evelyn D.  
Fannie  
Ferita P.  
Frances Paul  
George  
Gina

Ford  
Weston  
Jeffery  
Wallace  
Harris  
Roberts  
Cox  
Logan

Johnson  
Wilson  
Ford  
Tran  
Agnew  
Drummond  
Hoye  
Watkins III  
Sheppard  
Fields  
Moriarty  
Jackson  
Bryant  
Spears  
Hall, Sr.  
Leary  
Plenty  
Campbell  
Saunders-Hancock  
Boswell  
Turnipseed  
Wilmot & Associates  
Grant  
Reese  
Dean  
McClain  
Butts  
Hundley  
Wright  
Griffiths  
Mills  
Johnson  
Harmon  
Matthew  
Carter  
Steen  
Sims  
Ferguson Adams

Greta  
Harriet  
Harriett  
Helena  
Janette  
Janis  
Jeffery  
Karen  
Kenneth  
Kimberly  
Kimberly  
LaTonya  
Lillian  
Linda Jackson  
Linda L.  
L'Ornya  
Mamie  
Marian  
Marsha  
Martha  
Marva Jo  
Mary  
Melanie  
Monica  
Monica  
Monica Pearsall  
Necole  
Nichelle  
Ora M.  
Patricia  
Patricia  
Patricia  
Paula  
Philip  
Rachel  
Ramona  
Rhonda  
Rhonda  
Robin M.  
Rochelle  
Rodney  
Rodney  
Romaine  
Stacye  
Steven  
Susan  
Tania

Meadows  
Price  
Harper  
Valentine  
Harris  
Willard-Robinson  
Styles  
Rodman  
Brewer  
Varner  
Lincoln-Stewart  
Danson  
Carter  
Jones  
Felton  
Bowie  
Mallory  
Styles-McClintock  
Minter  
Herrin  
Camp  
Williams  
Shaw-Geter  
Johnson  
Roache  
Scarlett  
Washington  
Henderson  
Darby  
Baker-Simon  
Long  
Swinton  
Mitchell  
Strambler  
English  
Harper  
Waller  
Page  
Butler  
Graves  
Henderson  
Ellis  
Nelson  
Stewart  
Price  
Mack  
Shand

**\$100-\$249**

Terry  
Trisch  
Veronica  
Virgenia  
Wendy  
Zaunder

Abdinnah  
Aileen  
Albert  
Alena  
Alethea  
Alisa  
Alison  
Allison  
Alyce F.  
Amaya  
Andria  
Angela  
Anne  
Anthony  
Antonio  
Arthur  
Ashley  
Barbara  
Benjamin  
Benjamin  
Bernard  
Bertha N.S.  
Betty  
Beverly  
Branita  
Brian  
Briana  
Bridgette  
Camille  
Candace  
Carl  
Carrington  
Cecelia  
Cecelia Davis  
Chantel  
Charlene  
Charles  
Charles  
Charles  
Charles J.

Heil  
Smith  
Hill  
Embrey-Brock  
Long  
Saucer

Jalloh  
Atcherson  
Cheek  
Lowenthal  
Felton  
Hughley  
Bibb-Carson  
Blankenship  
Gaither  
Smith  
Wilkerson  
Hawkins  
Cooke  
Gadson  
Barros  
King  
Harris  
Freeman  
Wallace  
SOTO  
Fulton  
Harrison  
Horton-Hodge  
Yeargin-Booth  
Griffin Henson  
McDaniel  
Smith  
Kincaid  
Coppock  
Milner  
Turnipseed  
Smith  
Briscoe  
Hopkins  
Williams  
Washington  
Groce  
Chenault  
Saunders  
Baron



Charlie  
Charlotte Givens  
Chavon  
Cherie  
Christy  
Connie  
Consuelo  
Crystal  
Crystal Denise  
Cynthia  
Damon  
Dana  
Danielle  
Danita  
Daphne  
Darlene  
Darrell  
Darryl  
Dayna  
Deana  
Deanna  
Deinse  
Delali  
Delicia  
Delicia  
Delores  
Delores  
Desha  
Devin  
Dianne  
Donna  
Donna Crawford  
Dorvima  
E.  
Earline  
Earline E.  
Ebony Rashonda  
Ebony  
Ebony Harrington  
Edith  
Edythe  
Elayna  
Eleanor  
Eleanor  
Eleanor  
Emma  
Erica

Jones  
Douglass  
Onumah  
Young  
Williams  
Page  
Pettigrew  
Davis  
Lloyd-Williams  
Purvis  
Jackson  
Ware  
Lafhaj  
Walker  
Dunston-Wharton  
Johnson  
Housey  
Lucas  
Gilliard  
Timberlake-Wiley  
Sullivan  
Thomas  
Dagadu  
Webb  
Lewis  
Frazer  
Stevens  
Hagens  
Hairston  
Hawkins  
Griffen  
Townsend  
Thompson  
Lyas  
Burgess-Stanley  
Davis  
Thompson  
Parker Waugh  
Harris  
Geddings  
Challenger  
Rucker  
Lewis  
Padgett  
Smith  
Collington  
Lewis

Erica  
Estella  
Ethel Lee R.  
Eve  
Felicia  
Felisha  
Freddie  
Fredricka  
Gail  
Gail M.  
George  
Georgia  
Grady  
Greer Smith  
Gwendolyn  
Hattie C.  
Helen  
Henry  
Hollie  
Hope  
Ivana Roberts  
Jacqueline  
Jacqueline  
Jacqueline W  
Jacqueline Y. Brower  
James & Margaret  
James and Rachel  
Jamika  
Janet  
Janet  
Janice  
Janis D.  
Jasamyn  
Jasmine Garland  
Jean  
Jeanann  
Jeanice  
Jeanite  
Jeffrey  
Jeffrey  
Jennifer  
Jim and Claudette  
Joan Faye  
Joanne  
Jocelyne  
John  
John

White-Dunston  
LeMone  
Walker  
Lane  
Smith  
Lawrence  
Peaco  
Davis  
Kirkland-Briscoe  
Whitley  
Gibson  
Noone-Sherrod  
Crosby  
Gavins  
Singleterry  
Brown  
Scott  
Bell  
Lopes  
Ruffin  
Williams  
Scott  
Wilcher  
McGlen  
McKinney  
Miles  
Hicks  
Burge  
Edwards  
Rawls Tull  
Jackson  
Brown  
Roberts  
Tingling-Clemmons  
Brown  
Watson  
Stewart  
Holloway  
Washington  
Johnson  
Hayes  
Harrison  
Stewart  
Smith  
Kaboya  
Feaster  
Ngalame

John M.	Umble
Johnetta Boseman	Hardy
Joi	Grady
Jonathan	nash
Jordan	Camp
Joyce	Hewlett-Smith
Joyce	Moorehead
June	Jeffries
Karen	Gooden
Karen	Williamson
Karyn Smalls	Upshaw
Katherine	Mathis
Kathleen	Young
Kay	Proctor
Keiarea	Winston
Keiko	Takagi
Keima	Fludd
Keith and Debbbie	Parks
Kenneth and LaShawn	Manor
Kevin	Strong
Keyaynta	Redfearn
Kimberly	Wingfield
Kimberly	Mitchell
Komeka	Freeman
Konya	Lindsey
Kwanda Lynn	Trice
L. Pamela	Daniels
Lajoie	Grimes
Lamont & Gigi	Bessicks
Latasha	Williams
Lateef	Mtima
Latiera	Streeter
Latrena	Owens
Lauren	Hendricks
Lauren	Williams
Lauren R.	Propst-Riddick
Lawanda	Gresham
Lawrence	Thurston
Lillian	Durham
Lisa	Gissendaner
Lisa	Slade
Lorraine	Kirkpatrick
Loren	Williams
Loretta	White
Madeleine Wyche	Coleman
Mamie King	Fields
Mara	Wilson

Marcia  
Marella  
Marian  
Marilyn  
Marilyn  
Marlynn  
Marsha  
Marsha  
Mary A.  
Mattie  
Maya  
Melanie  
Melanie C. Johnson  
Mele  
Michael  
Michael  
Michael  
Michael A.  
Michelle  
Michelle  
Michelle Hill  
Miranda  
Molette  
Monica  
Monica  
Monica W.  
Natasha  
Nathaniel  
Nichelle  
Nickita  
Nicole  
Nicole  
Niquelle  
Olivia  
Ophelia L.  
Ora  
Ora Brown  
Patricia  
Patricia  
Patricia (Pat)  
Paula B.  
Pearl Michelle  
Randi  
Raquel  
Raquel  
Raven Star  
Regina

Smith  
Turner  
Davis  
Thorne  
Mitchell  
Barnes  
Mathis  
Minter  
Calbert  
Best  
Garrett-Loggins  
Curry  
Butler  
Melton  
collins  
Bracey  
Brown  
Holliday  
Pindell  
Reese  
Johnson  
Mixon  
Green  
Arrington  
Freeman  
Rose  
Oyedele  
Scott  
DeJesus-Sertsu  
Harrison  
Burgess  
Simmons  
Allen  
Holmes  
Grier  
Darby  
Tilghman  
Evans  
Hawkins  
West  
McKann  
Davis  
Agenbroad  
Fox  
Skinner  
Featherstone  
Gill



Renee  
Rhonda  
Rhonda  
Rhonda  
Rickey  
Rob  
Robbyn  
Robert  
Robert & Laura  
Robert & Mary  
Ronald and Constance  
Rosalind  
Roselyn  
Rose's Place Incorporated  
Rosie  
Roslyn  
Russ  
Sabreena  
Sabrina  
Sabrina E.  
Sandra H.  
ShaDowna  
Shamecca  
Shana  
Shani  
Shani  
Shannon and Ms. Shamira  
Sharita  
Sharon  
Sharon  
Sharon  
Sharon  
Shary  
Shaunia P.W.  
Shawn Wiseman  
Shawna  
Sheena  
Sheila  
Shenice  
Sherry  
Sonya  
Staci  
Starmanda Bullock  
Stephanie  
Stephanie  
Talanta  
Tamara

Carter-Perpall  
Johnson  
Tyson  
Caver-Holmes  
Siggall  
Grant  
Tureman-Steiner  
Khan  
Groleau  
Gill  
Hill  
Gallmon  
Aker-Black  
  
Allen-Herring  
Brown  
Williams  
Geddie  
McIntyre  
Williams  
Cox  
Jones  
Williams  
Diagne  
Walker  
Watson  
Mullen  
Hawkins  
Gibson  
Giles  
Jones  
Ottey  
Jones  
Carlyle  
Yancy  
Purvis  
Hutchinson  
Bruce  
Bostic  
Kelly  
Pass  
Addison  
Featherstone  
Samuels  
Montague  
Parker  
Rutland

Tamika  
Tanaya  
Tanesha  
Tasha  
Tawana  
Teena  
Tene  
Terri Lynn  
Terry A.  
Theron & Darlene  
Tia  
Tia  
Tiffany  
Tim  
Tomeka  
Tracy  
Tracy Jenkins  
Trinna  
Tu  
Uchechi  
Valerie  
Valerie  
Valeta  
Vaughan  
Veonca  
Victor  
Wanda  
Wileeta  
Yasmin  
Yvonne  
Zakiya

Jones  
Thomas  
Straughter  
Carroll-Seals  
Tucker  
Banks  
Davis  
Lewis  
Walker  
Miller  
Harper  
Breckenridge  
Gilliard  
Smith  
McKenzie  
Harrison  
Dobbins  
Parris  
Phan-Kerr  
Wosu  
Toyer  
Bly  
Sutton  
Harris  
Richardson  
Green  
Saxon  
McGee  
Brown  
Jones  
Hutchinson

***Thank you from the Board of Directors and  
members of The Ivy Foundation.***

This report compiled and completed by:  
Chairman of the Board  
Executive Director  
Board of Directors

2017 Ivy Foundation Annual Report



640 S Street, NW  
4<sup>th</sup> Floor  
Washington, DC 20002  
(202) 723-1111  
[www.dcityfoundation.org](http://www.dcityfoundation.org)